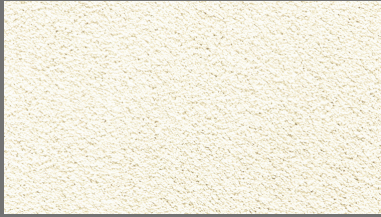




**ROMEO**

# ROMEO



CREAM 636



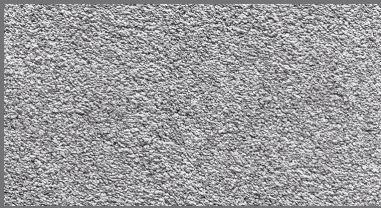
OYSTER 632



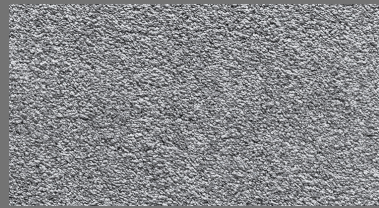
DESERT 635



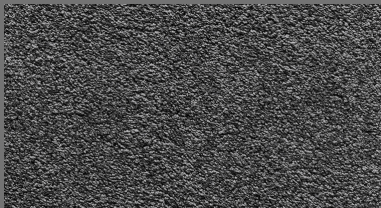
MUSHROOM 641



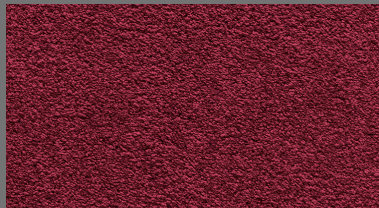
LIGHT GREY 693



DARK GREY 696



CHARCOAL 698



RED 616

Yarn	100% ultra-soft Nylon
Backing	Twin Back
Total Weight	+/- 2700gsm
Total Thickness	+/- 12mm
Location Grade	Heavy Residential
Width	4m
Guarantee	5 year maintenance linked
Warranty	10 year limited wear

## UNIQUE SELLING FEATURES

- stylish and modern colours
- ultra-soft for a luxurious underfoot experience
- elegant look and feel that will compliment any space in your home

# FLOORNET

For accurate colour references, please refer to a sample swatch.

0800 CARPET (0800 227 738) | [www.floornet.co.za](http://www.floornet.co.za)

## Did you know?

- Care must be taken when ordering or installing carpeting. Like all textile products, it is subject to shade variation between batches.
- Due to dye lot variations, actual material may vary from samples. Certain light sources shining across the surface may emphasise the effect of shadow lines. These are not a manufacturing defect and will not detract from the performance of the carpet.
- Adequate precautions must be taken to protect the carpet against direct sunlight to prevent premature fading or damage.
- Regular vacuum cleaning is essential. Spills and surface stains can be removed by sponging with a damp cloth, or for more resistant stains, with a mild detergent solution.
- A well maintained carpet can reduce airborne allergens, contributing to healthier indoor air quality. Unlike other surfaces, carpet traps dust particles, which keeps them out of the air, and allows them to be easily vacuumed up.