



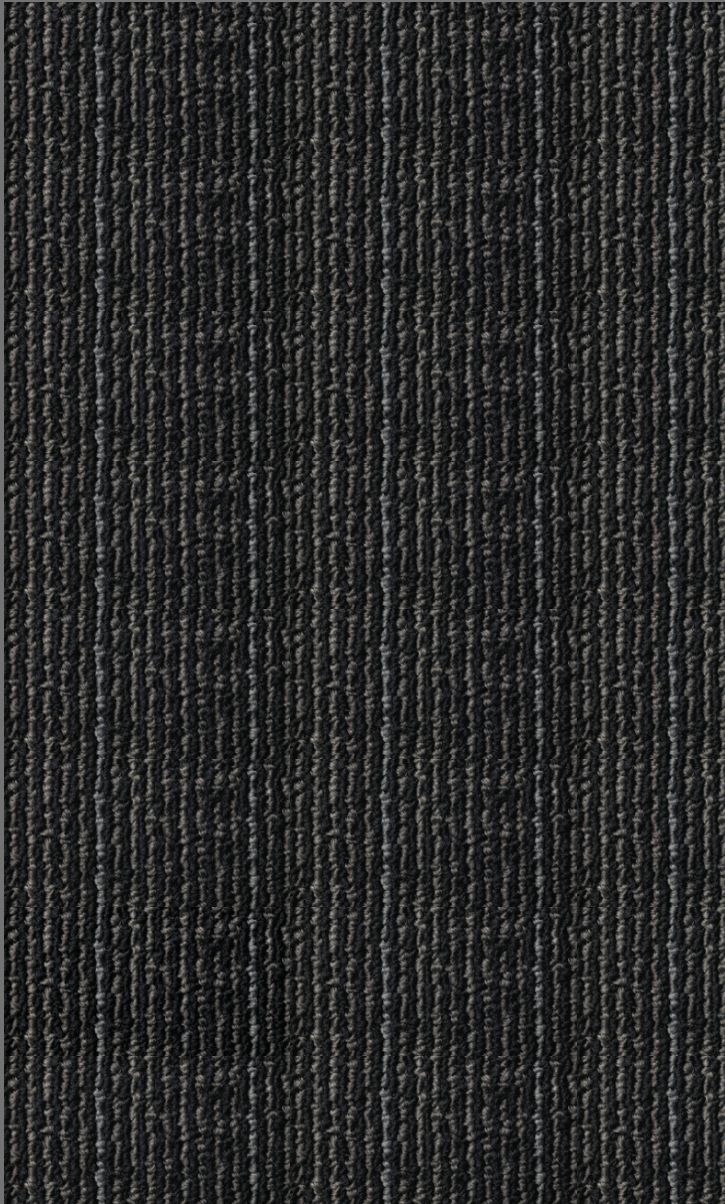
**LINEAL**

**SOLUTION  
DYED**



# LINEAL

SOLUTION  
DYED



## ANISEED

For accurate colour references, please refer to a sample.

Yarn	100% Solution Dyed Nylon
Backing	Bitumen Back
Total Weight	+/- 3800gsm
Total Thickness	+/- 7mm
Location Grade	Heavy Commercial
Size	50cm x 50cm
Guarantee	5 year maintenance linked
Warranty	10 year limited wear
Green Certification	Information available on request

### UNIQUE SELLING FEATURES

- tufted bitumen carpet tile in a stylish linear design and tones of grey for colour matching flexibility with furniture and fabrics
- made from solution dyed nylon (SDN) yarns providing superior serviceability and performance in heavy commercial applications
- stainsafe and colourfast yarn for easy cleaning and maintenance

# FLOORNET

0800 CARPET (0800 227 738) | [www.floornet.co.za](http://www.floornet.co.za)

### Did you know?

- Care must be taken when ordering or installing carpeting. Like all textile products, it is subject to shade variation between batches.
- Due to dye lot variations, actual material may vary from samples. Certain light sources shining across the surface may emphasise the effect of shadow lines. These are not a manufacturing defect and will not detract from the performance of the carpet.
- Adequate precautions must be taken to protect the carpet against direct sunlight to prevent premature fading or damage.
- Regular vacuum cleaning is essential. Spills and surface stains can be removed by sponging with a damp cloth, or for more resistant stains, with a mild detergent solution.
- A well maintained carpet can reduce airborne allergens, contributing to healthier indoor air quality. Unlike other surfaces, carpet traps dust particles, which keeps them out of the air, and allows them to be easily vacuumed up.