



**COASTLINE**

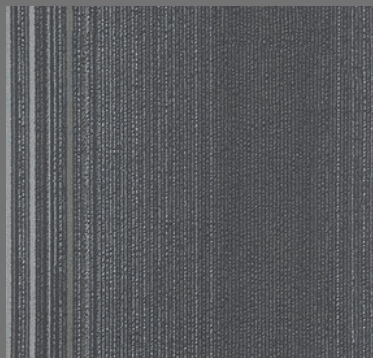
**SOLUTION  
DYED**

# COASTLINE

SOLUTION  
DYED



GREY BLACK 010



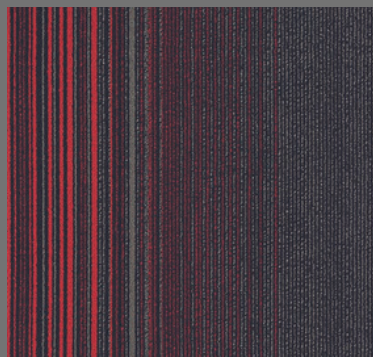
SILVER GREY 02



BLUE GREY 08



BROWN BEIGE 01



RED CHARCOAL 06

For accurate colour references, please refer to a sample.

Yarn	100% Solution Dyed Polypropylene
Backing	Bitumen Back
Total Weight	+/- 3600gsm
Total Thickness	+/- 6mm
Location Grade	Medium Commercial
Size	50cm x 50cm
Guarantee	5 year maintenance linked
Warranty	10 year limited wear
Green Certification	Information available on request

#### Bill of Quantities

Coastline ( + colour name) Bitumen back Medium Commercial tufted tiles by Floornet, available in 50 x 50 cm and made from 100% solution dyed polypropylene, with a total thickness of +/- 6mm and a total weight of +/-3600gsm, to be laid in accordance with the code of practice for the installation of textile floor coverings (SANS 10186).

#### UNIQUE SELLING FEATURES

- stylish linear design creating an exciting and trendy work space
- exciting colour palette providing creativity with furniture and fabrics
- can be laid in various directions creating different patterned effects
- stainsafe and colourfast yarn for easy cleaning and maintenance

# FLOORNET

0800 CARPET (0800 227 738) | [www.floornet.co.za](http://www.floornet.co.za)

#### Did you know?

- Care must be taken when ordering or installing carpeting. Like all textile products, it is subject to shade variation between batches.
- Due to dye lot variations, actual material may vary from samples. Certain light sources shining across the surface may emphasise the effect of shadow lines. These are not a manufacturing defect and will not detract from the performance of the carpet.
- Adequate precautions must be taken to protect the carpet against direct sunlight to prevent premature fading or damage.
- Regular vacuum cleaning is essential. Spills and surface stains can be removed by sponging with a damp cloth, or for more resistant stains, with a mild detergent solution.
- A well maintained carpet can reduce airborne allergens, contributing to healthier indoor air quality. Unlike other surfaces, carpet traps dust particles, which keeps them out of the air, and allows them to be easily vacuumed up.
- Use carpet protector mats for chairs with castor wheels.